

SIER ELECTRONICS CO., LTD

A: 2nd Floor, Building No.A2, Western sensor park, No.30 Jiangtan Xi Road, Baoji 721004, Shaanxi, China

Tel: +86 917 3652001

Fax: +86 917 3652001

Email: kenny@sierelectro.com

Web: www.sierelectro.com

SPK08 Electronic Pressure Switch

Features

- 4 bit high precision metre tube design, 180° reversible
- Flexible installation and 360° rotation of the main body
- Support multi-unit switching
- Flexible output configuration (return difference normally open/closed, window normally open/closed)
- Anti-shock, anti-vibration, switch life up to 100 million cycles
- Support a key to clear zero



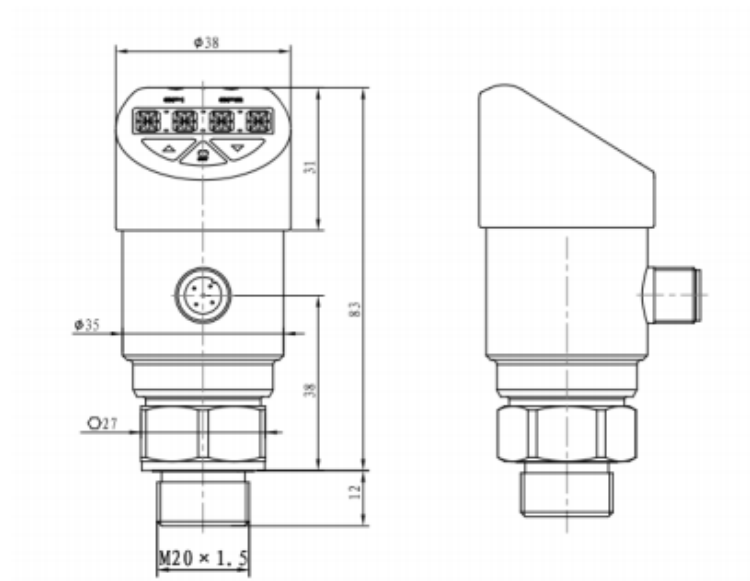
Introduction

The SPK08 electronic pressure switch integrates pressure measurement, display, output, and control, and is made of advanced components such as diffusion silicon sensors, ARM chips, solid-state relays, etc. It is a compact, reliable, and stable intelligent instrument. It is widely used in machine tools, hydraulic and pneumatic technology, pumps and compressors, mechanical manufacturing and other industries.

Specifications

Range	1...0 ~ 0.01...1000bar
Accuracy	±0.25%FS. ±0.5%FS
Display mode	LED
Pressure type	gauge, absolute or sealed gauge
Display range	-1999~99999
Overload	1.5 times FS or 1100bar to take the minimum
Display Mode	4 bit high precision metre tube
Long-term Stability	≤±0.2%FS
Offset thermal drift	0.03%FS/°C (≤1bar), 0.02%FS/°C (> 1bar)
Span thermal drift	0.03%FS/°C (≤1bar), 0.02%FS/°C (> 1bar)
Switch point	2 Ways Relay(PNP/NPN)
Compensated temp.	0°C ~ +50°C
Application temp.	-20°C~80°C
Storage temp.	-40°C~80°C
Power supply	24VDC±20%
Load capacity	≤24V 1.5A
Housing protection	IP65
Electrical connection	Aviation connector

Outline Dimension(unit:mm)



Wiring

M12×1 Navigation insertion body	Wiring diagram	Wiring definition
	<p>NPN output</p>	<p>1: VCC (Power+)</p> <p>2: SP2 (Switch 2)</p> <p>3: GND (Power-)</p> <p>4: SP1 (Switch 1)</p> <p>5: 4~20mA</p>
	<p>Relay output</p>	<p>1: VCC (Power+)</p> <p>2: SP2 (Switch 2)</p> <p>3: GND (Power-)</p> <p>4: SP1 (Switch 1)</p> <p>5: 4~20mA</p> <p>6: COM1(Switch 1 public end)</p> <p>7: COM2(Switch 2 public end)</p>

Note:

In order to reduce the influence of electromagnetic interference, the following items should be noted:

- Keep wiring connections as short as possible.
- Use shielded wire.

Datasheet

- Try to avoid direct access to the wiring of user devices or electrical and electronic devices that cause interference.
- If installed with micro-hose, the housing must be grounded separately.

Order Guide

SPK08	Electronic pressure switch					
	Range	1...0 ~ 0.01...1000bar				
	[0~X]bar	X: the actual measured pressure				
		Code	Switch Type			
		P	PNP			
		N	NPN			
		G	Relays			
			Code	Electrical connection		
			B3	Aviation connector		
				Code	Others	
				C1	M20*1.5 male thread	
				C2	G1/4 male thread	
				C3	G1/2 male thread	
SPK08	[0~10bar]	P	B3	C1	the whole spec	