

SIER ELECTRONICS CO., LTD

A: No.1 Binhe Nan Road, Baoji 721004, Shaanxi, P.R.China
Tel: +86 917 3652001 Fax: +86 917 3652001
Email: kenny@siereselectro.com Web: www.siereselectro.com

SDS01 Dust Concentration Monitor

Features

- On-line continuous monitoring for various emission sources.
- Combined techniques: adaptive stabilization, dynamic adaptive phase-locked amplification.
- Very low zero drift, patented technology of on-line calibration.
- Compact, easy to install, anti-lightning, high adaptability, low cost and less maintenance.



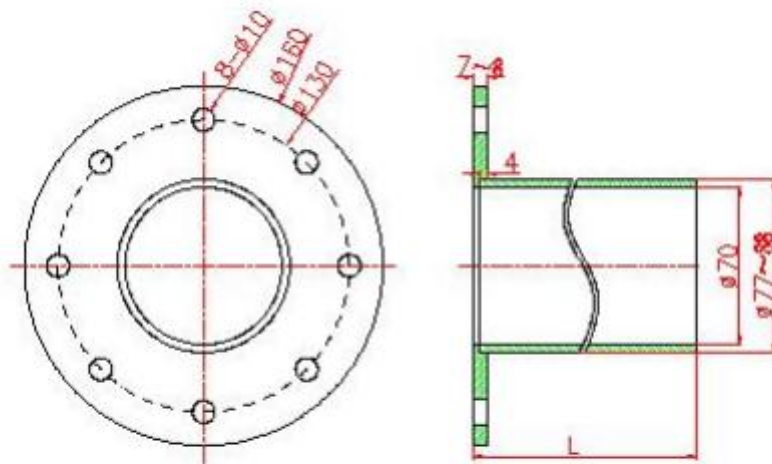
Introduction

The laser beam passes across the stack or duct work and is reflected by the dust particles, the reflected light is then detected by the photoelectric sensor. The intensity of reflected laser signal is proportional to dust concentration, by which the resulting signal is analyzed to yield dust concentration. This dust concentration on-line monitor is used to fix the particle concentration measurement in the powder gas emission of the pollution source. The instrument is composed of electrical system, optical system, structural system, in order to prevent the lens from dust pollution, supporting the use of blow-off system, the use of continuous flow of air to block dust erosion lens, to ensure that the optical energy signal collected by the instrument is true and reliable. This instrument can be used for cement, thermal power, steel, metallurgy, refining, aluminum, petrochemical, paper, glass industry and other industries fixed pollution source powder emissions in particulate matter concentration measurement.

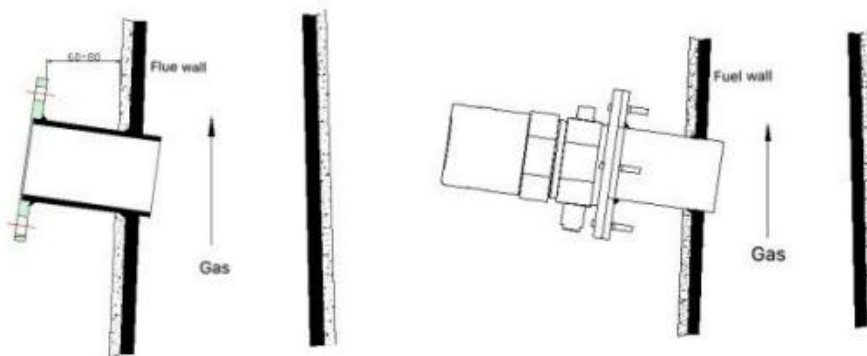
Specification

Principle of operation	Laser back-scattering
Test object	Particulate matter
Construction	186*200*182mm(L x W x H)
	Weight:3kg
	Protection:IP65
Optical characteristic	Wavelength: (650±20) nm
	Range:0 ~ 100mg/m ³ , 0 ~ 1000mg/m ³
	Zero:±2%FS/24hrs
	Span:±2%FS/24hrs
	Time:≤ 10s
	Diameter: (0.4-20) m
Power supply	VDC 24V±10%/0.5A
Environment	Working temperature:-30℃~+60℃
Output signal	4-20mA. 0-5V. RS485
	Max. Output load:300

Installation



Flange hole and size



Installation diagram

Precautions for self-contained embedded flanges:

If you prepare your own pre-buried flanges, you need to meet the following points:

1. the installation hole center distance is 130 mm
2. mounting hole diameter 10mm.

Connection

