

SIER ELECTRONICS CO., LTD

A: No.1 Binhe Nan Road, Baoji 721004, Shaanxi, P.R.China
Tel: +86 917 3652001 Fax: +86 917 3652001
Email: kenny@sierselectro.com Web: www.sierselectro.com

SPT21P Sanitary Pressure Transmitter-Clamp Mounting

Features

- Reliable performance, easy application
- Short protection and reverse polarity protection
- Gauge, absolute and sealed gauge optional
- Clamp mounting, for sanitary application



Introduction

SPT21P is piezo-resistive pressure transmitter, uses high stable and reliable pressure sensor and special circuit board to produce transmitter. This product is having standard clamp mounting, typically used for food & beverage application.

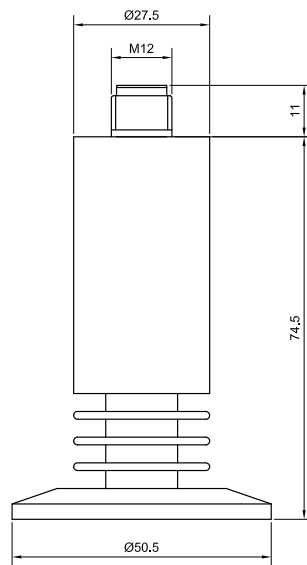
Specification

Item	Specification
Pressure range	-1...0~0.2...350bar (-1...0 ~ 0.2...350bar)
Over pressure	1.5 times FS
Pressure type	Gauge/absolute/sealed gauge optional
Process connection	G1/4 male thread (customized)
Accuracy	±0.1%FS. ±0.25%FS. ±0.5%FS
Long term stability	≤ ±0.3%FS/year
Offset thermal drift	0.1%FS/°C(≤1bar); 0.05%FS/°C(> 1bar)
Span thermal drift	0.1%FS/°C(≤1bar); 0.05%FS/°C(> 1bar)
Compensated temp.	0~50°C
Application temp.	-30~80°C
Storage temp.	-40~120°C
Power supply	12~28VDC
Output signal	4-20mA. 0-5V. RS485. etc
Load resistance	≤ (U-12) /0.02Ω (2-wire) , ≥10k (3-wire)
Housing protection	IP65
Electrical connection	DIN43650 plug/M12 connector/Cable

Construction material (Default version)

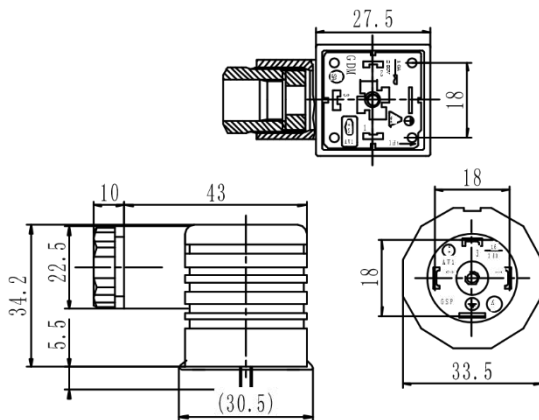
Housing	SS304
Pressure port	SS304
Diaphragm	SS316L
Sealing gasket	Viton
Plug housing	Plastic
Cable	Φ7.5mm Polyethylene Special Cable

Outline Dimension(Unit:mm)



M12 connector high temperature version

Electrical Connection



Pin	2-wire	3-wire
1	+V	+V
2	+OUT	GND
3	Null	+OUT

Wire color	2-wire	3-wire
Red	+V	+V
Green	+OUT	+OUT
Black	Null	GND

Order Information

SPT21P	Sanitary Pressure Transmitter-Clamp Mounting				
	Range	0 ~ 1...0 ~ 0.2...350bar (-1...0~0.2...350bar)			
	[0~X] bar	X: the actual measured pressure			
		Code	Output signal		
		E	4~20mADC		
		J	0~5VDC		
		V	0~10VDC		
		V1	0.5~4.5VDC		
			Code	Construction material	
				Diaphragm	Pressure port
			22	SS316L	SS316L
			24	SS316L	SS316L
				Code	Others
				B1	DIN43650 connector
				B2	Cable exit
				B3	M12 connector
				CX	2" clamp mounting
				G	Gauge
				S	Sealed gauge
				A	Absolute
SPT21P	[0~1bar]	E	22	B1CXG	the whole spec

Note:

1. Please pay attention that the media should be compatible with the contacted parts;
2. If any special requirements on function or specification, please contact with us freely.